



A Rockwell Automation Company

The Corporation of Delta, BC Scada System Additions

The Client:

The Corporation of Delta began as a farming and fishing community and was granted municipal status in 1879. It is now comprised of three communities, Tsawwassen, Ladner and North Delta. The area is accessible by rail, water and major highways in all directions, and is roughly 35 minutes from Vancouver and 25 minutes from the Vancouver International Airport. The many facets of Delta living and working are encompassed within 364 square kilometers bounded by the Fraser River on the north, the US

Border and Boundary Bay on the south, the District of Surrey on the east, and the Strait of Georgia on the west. An extensive dyke and drainage system alleviated the flooding problems that had previously plagued Delta farmers, enabling them to produce bountiful crops from the fertile soil.

The Requirement:

The Corporation of Delta maintains an extensive pumping and drainage system to manage their dykes. This system is monitored and controlled by a Supervisory Control and Data Acquisition (SCADA) system. One of the previously unmonitored lift stations was being increased in flow throughput. With this increase in the horsepower capacity of the station, a dedicated HMI system for operator input was now required. This HMI would provide local control and monitoring of information from local devices and

remote RTUs. The customer specified that the HMI would run peer to peer with their existing Motorola Moscad RTUs, and be connected to an existing master SCADA system located at their main works yard.

The Design Solution:

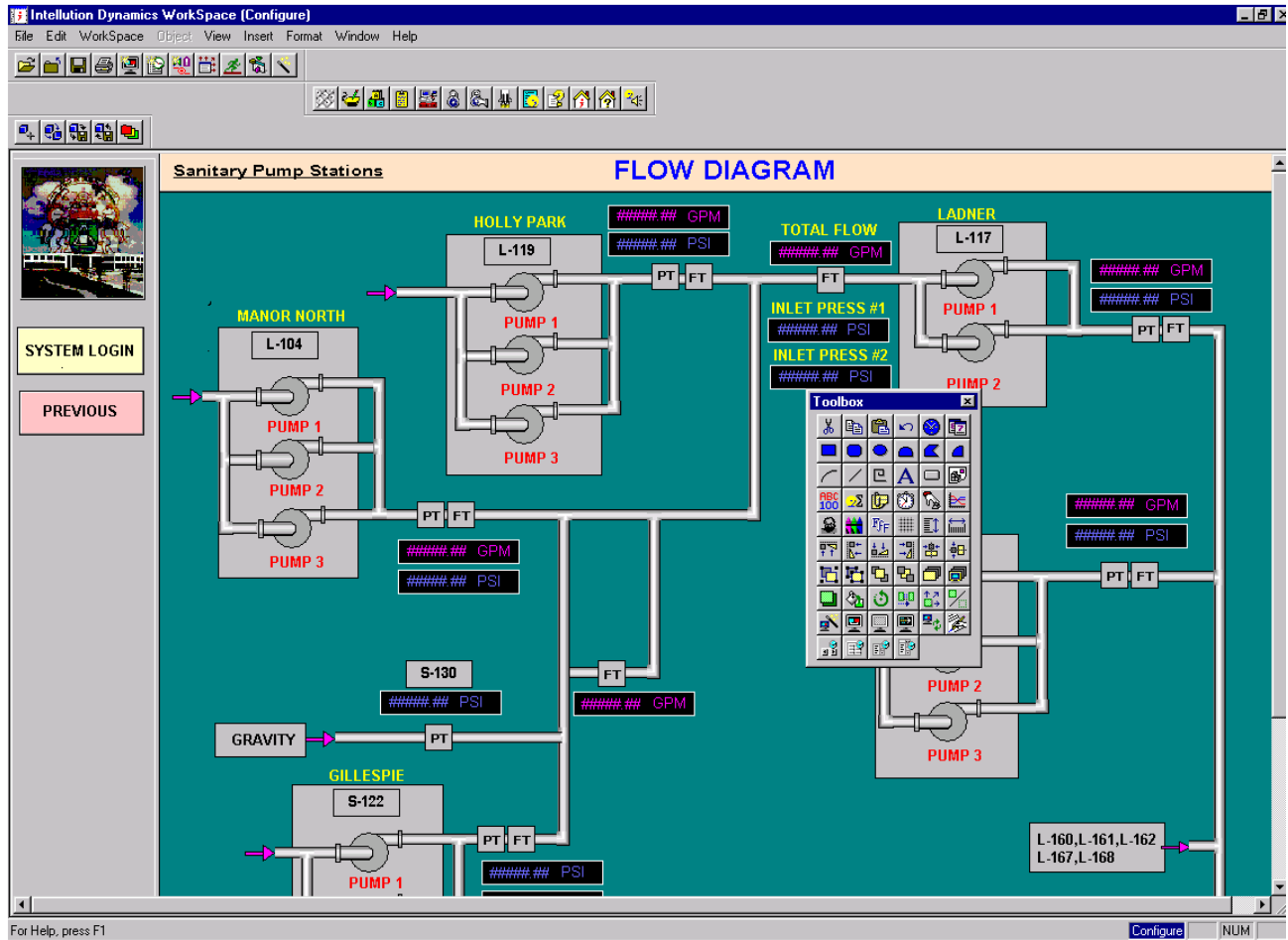
Hinz was asked to develop the graphics that are associated with the field devices in this station and all of the data that is being collected by the RTU from other stations within the Corporation. The client was using an iFix Intellution 2.6 HMI package running on a Modbus protocol. Existing stations were used as the template to maintain consistency within the system. The client wanted additional information and a graphical interface in contrast to the tabular approach

previously used in their SCADA system. The new displays that were created included trending and additional alarms. Once this local HMI system was developed and commissioned it was ported to the main SCADA master located in the works yard.



A Rockwell Automation Company

The Corporation of Delta, BC Scada System Additions



System Specifications:

- iFix 2.6
- Motorola Moscad RTU

For further information or to contact a Hinz office near you, please check our website at:

www.hinz.com