



A Rockwell Automation Company

## CSP Foods CSP Foods FactoryLink HMI Upgrade

### The Client:

CSP Foods is a full-service food ingredient manufacturer. Their specialized equipment allows them to produce a wide range of products from finely milled grains and dry mixes, dried fruits, fillings, fondants, and spices.

CSP Foods operates four manufacturing and twelve distribution outlets across Canada. The

plant in Saskatoon houses the CSP Baking Center, a hub for product research and development.

CSP Foods is a division of Saskatchewan Wheat Pool, part of the largest grain handling company in Canada.

### The Requirement:

The client was in the midst of a Y2K project to replace their FactoryLink/DOS HMI network with a FactoryLink NT HMI network when the CSP Foods employee doing this upgrade left the

company for another position. Hinz was given the task of completing the project.

### The Design Solution:

The seven station FactoryLink NT HMI network was commissioned in several stages. The first section, which directly replaced the two existing FactoryLink/DOS stations, was commissioned first. This controlled the mill as well as the packing areas. This area consisted of 50 screens and 300 alarms.

Hinz completed the design and implementation of approximately half of these screens. The Bakery section was commissioned next and was a new control area entirely designed by Hinz. It consisted of 60 screens and 200 alarms. The Planning and Production sections were also

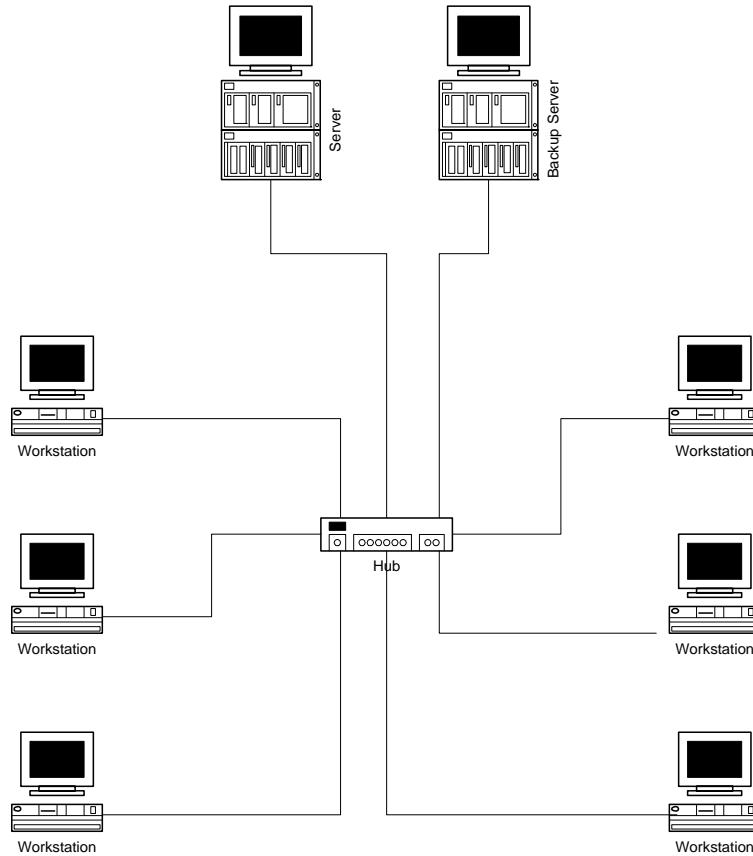
designed entirely by Hinz, and included 80 screens and 50 alarms. These areas were commissioned last. Much of the database design for the Bakery, Production, and Planning areas was done by Hinz.

The main server is highly redundant and can continue to run with many single hardware failures. In case of total failure, the backup server can be running the mill within minutes.



A Rockwell Automation Company

## CSP Foods CSP Foods FactoryLink HMI Upgrade



### System Specifications:

- 6 Dell Workstations running NT Workstation 4.0 and FactoryLink ECS HMI software
- Dell server running Windows NT Server 4.0 and FactoryLink ECS HMI software with:
  - redundant processors
  - redundant power supplies
  - redundant backplane
  - RAID 5 data storage drives
  - RAID 1 operating system drives
- Dell backup server running Windows NT Server 4.0 with :
  - single processor
  - redundant power supplies
  - redundant backplane
  - RAID 1 operating system drives
- Backup server serves as the Backup domain name server and has another FactoryLink license. In the case of a catastrophic failure, the backup server can be running as the FactoryLink Server within minutes.

For further information or to contact a Hinz office near you, please check our website at:

[www.hinz.com](http://www.hinz.com)