



A Rockwell Automation Company

Northwood Panelboard Finishing Line Modifications

The Client:

Northwood Panelboard Company is jointly owned by Toronto based Nexfor and Mead Corp. of Dayton, Ohio. The mill is managed by Norbord Industries, a subsidiary of Nexfor. When the mill opened in June of 1981 it was one of the largest OSB mills of its kind. Technological improvements have been implemented

over the years so that it is still one of the largest and most efficient OSB plants in North America with current annual production exceeding 400 million square feet 3/8" basis.

The Requirement:

Northwood started experiencing a "bottleneck" in the finishing area, after the new conveyor dryer was added in 1996.

In order to maintain their competitive position in the market place, Northwood concluded that it needed to increase the throughput of the finishing system. This finishing line project involved adding new transfer

rolls, stacker, stencil machine, sygnode strapper, strapper outfeed rolls, package outfeed transfer system, etc.

Since the finishing line modification at Northwood, the throughput has increased to an optimum level.

The Design Solution:

As a result of our involvement with the Nexfor-Tupelo Greenfield OSB Plant and the Northwood-Bemidji, MN, Conveyor Dryer Project, Hinz was asked to assist Northwood Panelboard with the design of power and control systems for the finishing line upgrade project.

The design of the electrical system included: equipment layout of the existing electrical room, individual VFDs, modifying and adding new sections to the existing 480V MCCs, control power transformer/panel, PLC cabinet, pull boxes, conduit layouts and mounting details.

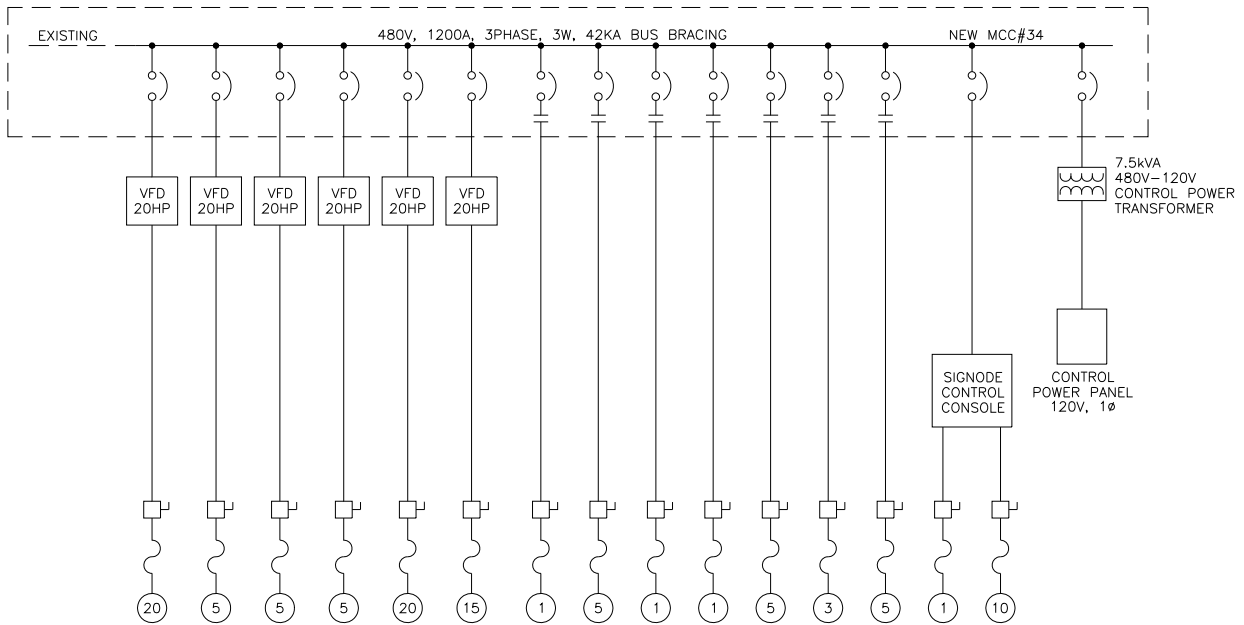
The following documentation was provided for

construction: Electrical room layouts, MCC layout, motor locations layout and motor list, device locations layout, conduit layouts, power and control interconnection block diagrams, individual PLC Module schematics, PLC cabinet components layout, and motor schematics.



A Rockwell Automation Company

Northwood Panelboard Finishing Line Modifications



System Specifications:

- New 112 HP Load at 480V
- New 480 MCC Sections Added
- 6 Wall-Mount Allen-Bradley 1336+ VFDs
- 1 New PLC Cabinet Added
- 7.5kVA Control Power Transformer
- 1 Signode Control Console

For further information or to contact a Hinz office near you, please check our website at:

www.hinz.com