



A Rockwell Automation Company

LP Corp. Dawson Creek - Dryer Addition

The Client:

Founded in 1973 and headquartered in Nashville, Tennessee, LP is one of the largest building products manufacturers in North America. They currently operate 25 mills throughout the United States, Canada, and Chile. LP owns almost a million acres of timberland, predominantly in the southern United States.

Louisiana-Pacific Canada Ltd. Dawson Creek OSB is an Oriented Strand Board plant located in Dawson Creek, B.C.

The Requirement:

LP-Dawson Creek recently upgraded their OSB mill with three new single pass rotary dryers. This installation required enhancements to mechanical, electrical, instrumentation, and controls. Hinz was responsible for providing the PLC and HMI programming for the new dryers. Additional programming was required for the plant-wide control system to integrate the new dryer interlocks.

Hinz requirements can be broken down into six major areas of responsibility:

1. Project Management.
2. Field investigation of existing control and operational requirements for conversion of the control system to the new single pass dryers.

3. Wonderware Human Machine Interface (HMI) programming based on a LP's standards.
4. Modicon (ProWORX Nxt) PLC programming based on a LP's standards.
5. Startup/Commissioning Support.
6. Development of an Operators Manual and Operator Training

The Design Solution:

Hinz coordinated with the client personnel to provide the PLC and HMI programming and start-up commissioning assistance for the LP-Dawson new three-dryer system at their Dawson Creek plant. The PLC and HMI control system programming was based on the corporate standard of Modicon PLCs and Wonderware HMI.

The programming for the Modicon Quantum family of PLCs used ProWORX Nxt software.

The HMI Wonderware application was developed using LP/Hinz standards for Dual-monitors along with

Hinz standards for dryer systems control. The HMI application was developed using Wonderware InTouch software.

The Modicon Quantum hardware included standard discrete and analog modules.

The Human Machine Interface (HMI) is a Wonderware InTouch version 8.0 application.

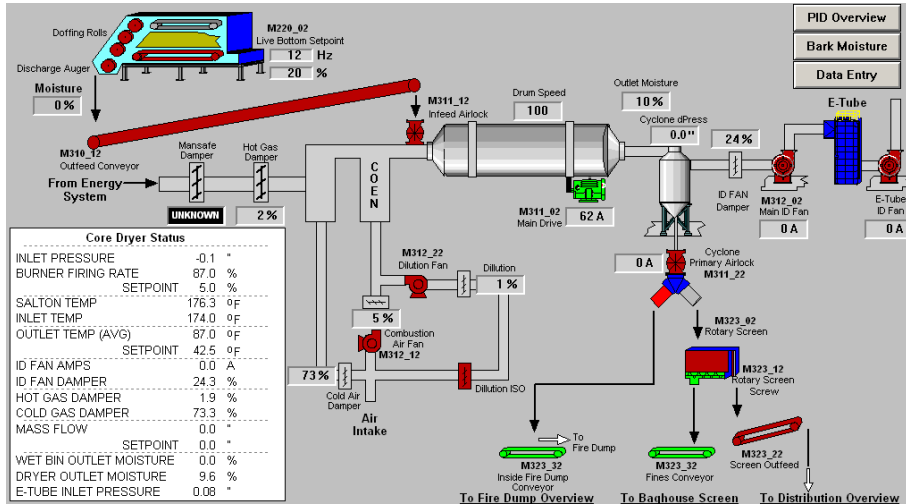
Operator training was completed while on site during and after the system commissioning.



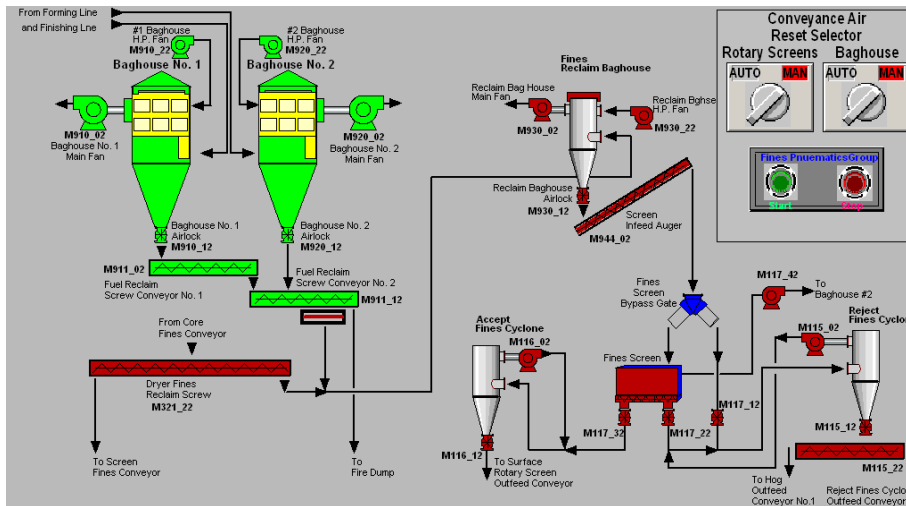
A Rockwell Automation Company

LP Corp. Dawson Creek - Dryer Addition

Examples of Project HMI Screens:



Overview Screen



Baghouse Dust Collection Screen

System Specifications:

- Modicon Quantum
- Modicon ProWORX Nxt version 2.2 patch 6
- Wonderware InTouch v. 8.0

For further information or to contact a Hinz office near you, please check our website at:

www.hinz.com