



A Rockwell Automation Company

ATCO Electric Year 2000 Audit

The Client:

ATCO Electric (formerly Alberta Power Limited) is a major power generating company in Alberta with a number of coal-fired steam generating plants in the province. The Sheerness Plant is located south of Hanna,

Alberta. Low sulfur coal is strip mined from a mine adjacent to the plant. The coal is processed and fed into two boilers, which in turn power two turbine generators.

The Requirement:

As the millennium was advancing, ATCO Electric needed to ensure that their facilities would operate in a safe and effective manner in the year 2000, and beyond. This was

to be accomplished by ensuring all system facilities were Y2K ready.

The Design Solution:

Hinz was contracted to work with the ATCO Electric engineering staff to do a complete audit of the facility. Compliance information was to be gathered from manufacturers. Local and corporate Y2K databases were to be maintained and records kept. Reports were to be generated for each item inventoried.

Audit Phase

Hinz staff, with some assistance from ATCO Electric staff, made a thorough examination of the plant. Control panels and other end devices were examined and a record was made describing each item as fully as possible. Many items were assessed to have no Y2K sensitivity, but to show due diligence in the inventory procedure they were included as part of the audit. ATCO staff met to determine what other business and management systems needed to be audited. Each audited item was given a Y2K inspection sticker. The audit sheets were used for the local Y2K inventory database and were also sent to the corporate office to be entered into a company wide Test2000 database.

Assessment Phase

A risk analysis was done on each item audited and those items that put the plant's operation in jeopardy were especially noted. Also each item was assessed to determine whether a microprocessor was used and whether it had time/date functionality.

Using all the tools at our disposal, Hinz contacted the manufacturers to obtain compliance statements. Because this audit was started before many other companies had begun their audits, many of the early responses from

manufacturers were difficult to obtain or incomplete. The internet became a source of more and more information over time, but many companies had to be contacted directly by phone, fax and email. Operator's manuals and engineering drawings were accessed to add to the completeness and clarity of the readiness statement made for each item.

Testing Phase

All items that contained time/date functionality were tested according to the ATCO Electric comprehensive test procedure. A report on each of these tests was completed and filed with all the contributing documentation. A report and accompanying documentation was also required for each date insensitive item.

Remediation Phase

All systems, which were found to be non-compliant were analyzed to determine the best path of remediation. The majority of the systems were found to have firmware or software upgrades available. These upgrades were procured by ATCO Electric and these upgrades were installed. Most of the process control computer nodes were upgraded as well as the software that was run on them. Only a few items required action plans to deal with Y2K non-compliant issues and these only showed themselves as nuisance issues rather than any real operations issues.

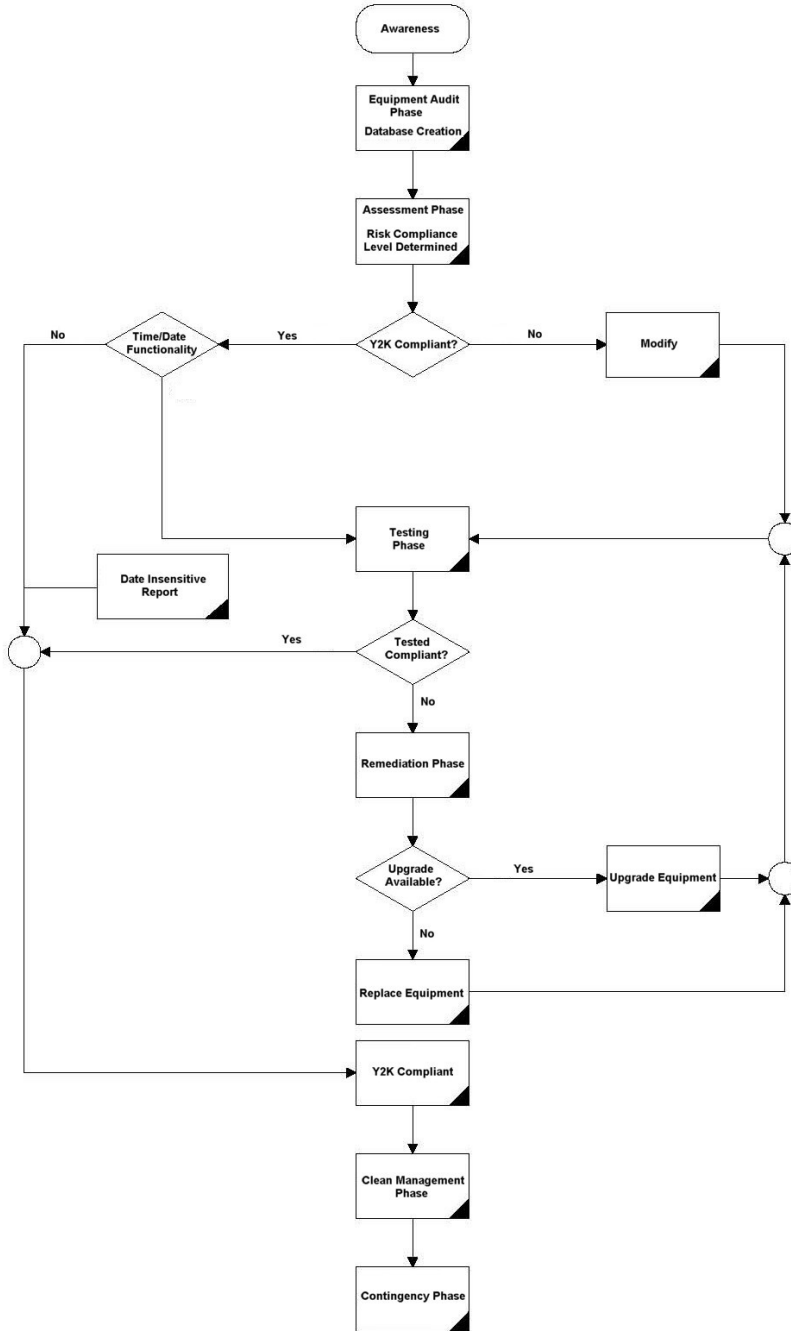
Management and Contingency

The databases, Y2K inspection sticker and inventory was an ongoing project until the Y2K rollover and associated dates had passed.



A Rockwell Automation Company

ATCO Electric Year 2000 Audit



For further information or to contact a Hinz office near you, please check our website at:

www.hinz.com